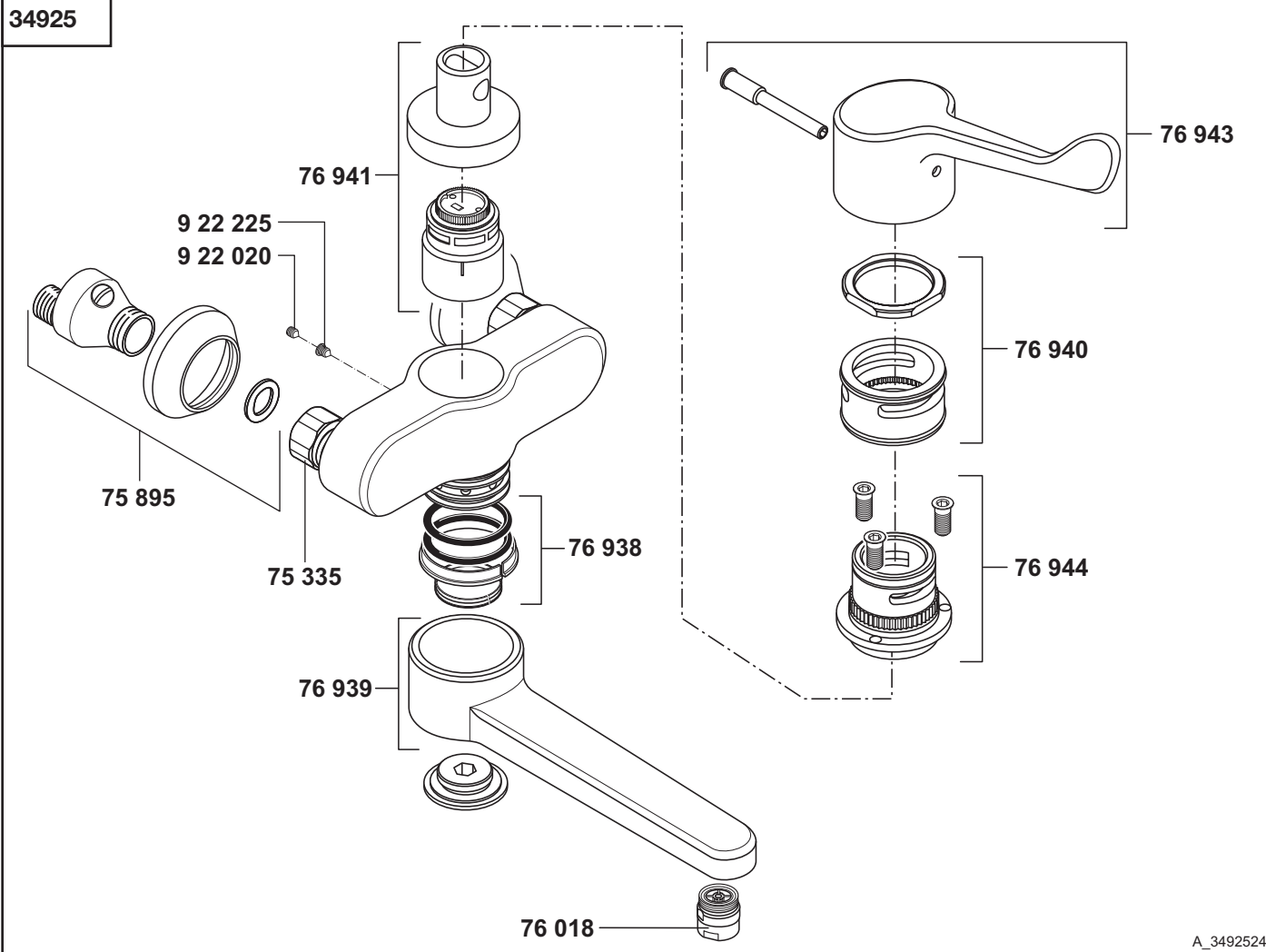


A\_349252A

34925	03/06 → Wand-Einhandmischer DN 15	single lever wall mixer DN 15	ééngreeps wandmengkraan 1/2"
	74 366 Kartusche, KLUDI MEDI-CARE 75 335 Wandarmaturanschluss 75 895 S-Anschluss 76 018 Care-Strahlregler 76 938 Dichtungssatz 76 939 Gussauslauf KLUDI MEDI-CARE 76 940 Desinfektionskranz 76 943 KLUDI MEDI-CARE, Klinik-Armhebel  76 944 Spannhülse 922 020 Auslaufbefestigungsschraube 922 225 Nirosta-Schraube	cartridge, KLUDI MEDI-CARE wall-fitting connection S union care flow straightener sealing set casted spout KLUDI MEDI-CARE disinfecting rim KLUDI MEDI-CARE, arm lever for hospital purpose fastening cap fastening screw for spout Stainless screw	cartouche, KLUDI MEDI-CARE wandmengkraan aansluiting S-koppeling Care-mondstuk set dichtingen gegoten uitloop KLUDI MEDI-CARE desinfectiering KLUDI MEDI-CARE, lange hendel  spanhuis bev. schroef voor uitloop Nirosta schroef

# KLUDI MEDI-CARE

34925



A 3492524

34925	Wand-Einhandmischer DN 15	single lever wall mixer DN 15	ééngreeps wandmengkraan 1/2"
	75 335 Wandarmaturanschluss	wall-fitting connection	wandmengkraan aansluiting
	75 895 S-Anschluss	S union	S-koppeling
	76 018 Care-Strahlregler	Care flow straightener	Care-mondstuk
	76 938 Dichtungssatz	sealing set	set dichtingen
	76 939 Gussauslauf KLUDI MEDI-CARE	casted spout KLUDI MEDI-CARE	gegoten uitloop KLUDI MEDI-CARE
	76 940 Desinfektionskranz	disinfecting rim	desinfectiering
	76 941 Kartusche, KLUDI MEDI-CARE	cartridge, KLUDI MEDI-CARE	cartouche, KLUDI MEDI-CARE
	76 943 KLUDI MEDI-CARE, Klinik-Armhebel	KLUDI MEDI-CARE, arm lever for hospital purpose	KLUDI MEDI-CARE, lange hendel
	76 944 Spannhülse	fastening cap	spanhuls
	922 020 Auslaufbefestigungsschraube	fastening screw for spout	bev. schroef voor uitloop
	922 225 Nirosta-Schraube	Stainless screw	Nirosta schroef